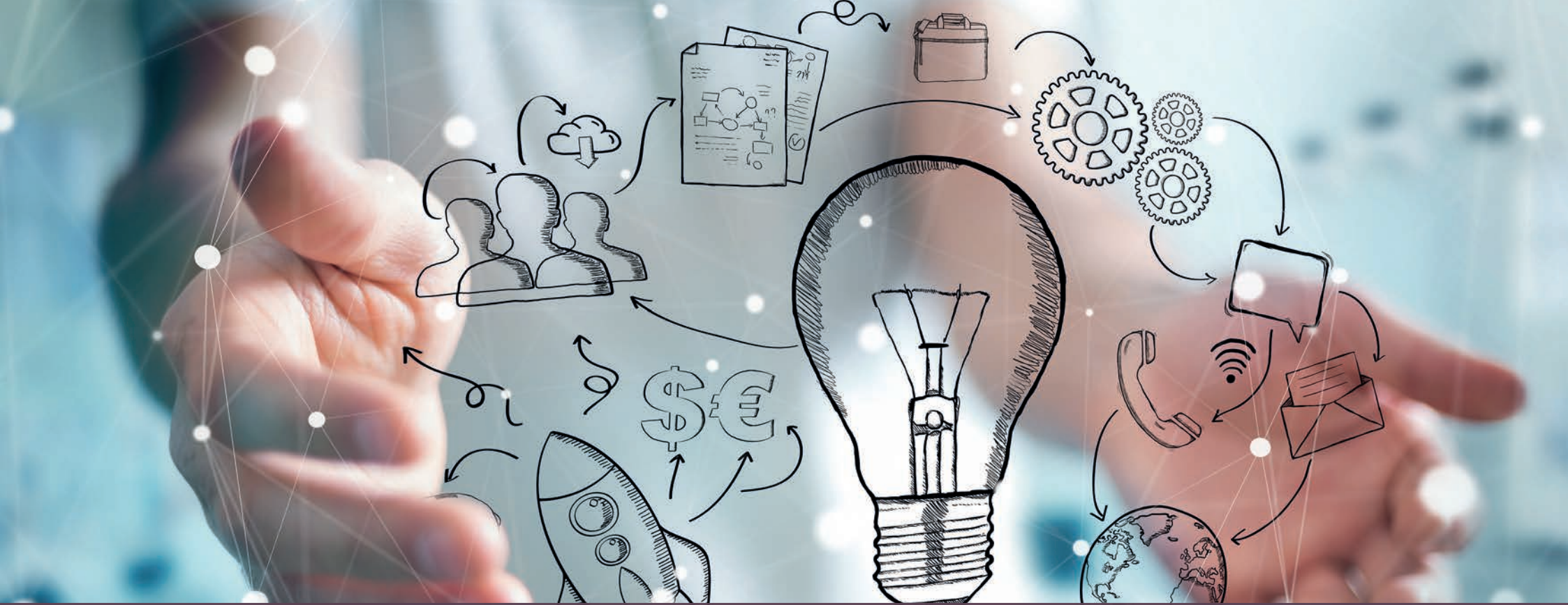




wheesbee

Your innovation guide

Search, Collaborate, Innovate.



Wheesbee is an innovative web platform capable of supporting researchers, managers and corporate users in **R&D projects** aimed at product innovation.

Wheesbee was designed to **facilitate, guide and make innovation systematic** within companies.

**A unique tool to support innovation.
Powerful, complete and easy to use.**

Five excellent reasons to adopt
Wheesbee in your company.

1

**Exploring and mapping
technological developments
and evolution trends**
in your industrial sector.



Acquire a competitive advantage
in your industry sector, discovering
today the technologies that will
become the ones in use tomorrow.

2

Finding partners for your R&I projects
or **selecting the best ideas and designs**
that are searching for partnerships
or joint ventures.



Accelerate technological processes thanks
to the technology transfer
and cooperation between companies,
research centres and Universities.

3

Identify opportunities for financing
within European, National
and Regional funds.



Give a boost to your projects.
The funds established by the European
Union for Research and Innovation in the
period 2014-2020 are over 120 billions.

4

Store, organise and share information
and documents within the company
and with one's partners.



Create value for your company
thanks to the exchange of knowledge
and experience at every level
of your organisation.

5

Monitor your competitors:
which technologies
are they trying out,
which patents did they register,
which Research projects have
been financed.



Increase your company's
competitiveness with continuous
and automatic monitoring
of technological developments
in your industry.



WHY YOU CANNOT DO WITHOUT WHEESBEE

More than 90% of the ideas do not evolve into an actual innovation project. Why? There are many reasons: poor knowledge of the market, lack of skills or adequate financial resources, inadequate sharing of processes and information. Wheesbee can support your company in each of these aspects.

The quantity of information necessary for R&I projects has grown exponentially in the last 10 years while research and sharing tools available within companies have remained essentially the same. Wheesbee represents an absolute novelty in the field of Technology Intelligence.

By 2020, according to the National Plan Industry 4.0, more than 3.000 innovation managers will be required. For them and for all those that already today are working on Research and Innovation projects, Wheesbee is a unique and unreplaceable tool.



RESEARCH

Wheesbee is a powerful search engine, designed and optimised for Research and Innovation projects



PATENTS: Approximately 60 million patents originate from a variety of international databases, including USA, Europe, Japan and China from 1985 to date.



SCIENTIFIC ARTICLES: Over 110 million scientific publications extracted from the CORE (Open Access Research Papers Aggregator)..



GRANTS: All the public financing available for Research and Innovation projects at European and national level (Netherlands, Germany, UK, France, Belgium and Italy).



FINANCED PROJECTS: Access to over 500,000 R&D projects funded by the European Community or by national funds (US, UK, DE, NL, FR).



COOPERATION OPPORTUNITIES: Databases for innovation projects for which the European companies are looking for partners.



WEB: Search and indexing of the most significant online resources for your industrial sector.



ORGANISATIONS: Possibility to search specific companies, Universities or research centres to identify projects, patents and public financing obtained.



DOCUMENTS: Categorisation and indexing of all contents of the company (technical data sheets, reports, marketing documentation, templates etc.).



COOPERATION

Wheesbee is also a platform for knowledge management with integrated functionalities for the organisation and sharing of relevant results and information between colleagues and partners of your company.

Instead of repeating more than once each search, you can tag a result (for example a patent) as **FAVOURITE** for you, for your company or add it to a virtual space called ROOM dedicated to a specific topic and decide which peers will be authorised to access it and share it. For each **ROOM** it is possible to define the frequency of monitoring across the entire information pool (documents, patents, scientific articles, projects and web resources) to remain automatically updated on the contents of interest.

A document management system (DMS) within the platform allows loading files (even from Dropbox), adding metadata such as title, author, description, tags and comments and share them with your peers.



INNOVATION

Our development team is constantly at work to identify links between the information, freeing value from the data and recommend to companies new paths to follow to innovate. It is a path that involves also existing clients with which we establish cooperation and partnership aimed at improving the platform on a continuous basis to make it higher performance and at the same time simpler to use.

Refine, **Visualize** and **Innovate** are three built-in tools in Wheesbee capable of further refining the quality of the search on patents, allowing visual browsing of results and recommending alternative technological solutions within the manufacturing processes.

Refine



It exploits the power of our semantic analysis algorithms to ensure even a more accurate search.

Visualize



Browse the search results and explore through visual browsing the information of greatest interest.

Innovate



Let yourself be inspired by our systematic innovation engine based on TRIZ methodology.

Wheesbee is deemed a "must-have" by many companies and European associations that deem technological innovation a pillar for the growth of one's organisation.



ENEL

The multinational utility company is one of the major operators in the electricity and gas sector. ENEL has adopted Wheesbee in a fully customised version integrated with its legacy systems. Currently more than 100 professionals that deal with innovation at ENEL use Wheesbee to perform intelligence analyses on trends, seek and share information on projects, patents and documents and use the Wheesbee crawler to browse and analyse websites of interest. In addition, Wheesbee is used to share internal information available both to stimulate cooperation in a large group of in-house and external professionals involved in the innovation processes.

ELICA

A global leader in kitchen hoods and one of the main players in Europe in the design, manufacturing and sale of electrical motors for appliances and furnaces. In order to explore and map the technological development processes and support innovation processes ELICA has adopted Wheesbee as its central system to access, share and analyse information on innovation. In addition, ELICA uses Wheesbee to map and find experts and establish new cooperation in the fields of greatest interest for the research activities.

Learn how Wheesbee can help your company to grow
in a market that is increasingly more competitive.



Register to the site for free
www.wheesbee.eu



Book your demo session
bit.ly/GoWheesbee



It is a product by



Innovation Engineering S.r.l.
www.innovationengineering.eu
Rome | Milan | Naples | Rijswijk

Phone: +39 06 45425111 | Email: info@innovationengineering.eu